

WISCONSIN



DWD

---

# WIOA State Plan

Phil Koenig

# Agenda

---

- Background
  - Role of CWI
  - Types of Plans
- Plan Partners
- Plan Framework
- Vision
- Strategy
- Timeline
- Required Actions



# Role of CWI

---

## **SEC. 101. STATE WORKFORCE DEVELOPMENT BOARDS.**

(d) FUNCTIONS.—The State board shall assist the Governor in—

- (1) the development, implementation, and modification of the State plan;

<http://www.wi-cwi.org/resources.htm>



# State Planning Under WIOA

WIOA ensures that employment and training services provided by core programs are **coordinated** and **complementary** so that jobseekers acquire skills and credentials that meet employer needs.



- A single, unified plan for each state for all WIOA core programs.
- Describes a state's overall workforce development strategy.
- Indicates how strategy meets identified skill needs for workers, jobseekers, and employers.
- Jointly approved by the Secretaries of U.S. Departments of Labor and Education.
- WIOA provides an option for states to submit a Combined Plan that includes core programs plus one or more other workforce programs.

# Wisconsin – Combined Plan 2016-2019

WIOA TITLE	WISCONSIN ADMINISTRATOR
Title I – System Requirements (Examples of system requirements are those requirements impacting all titles of WIOA, including state and local plans, state and local boards, the performance accountability system, and the Job Center system)	DWD- DET (Division of Employment and Training)
Title I-B Programs (Adult, Dislocated Worker, and Youth)	
Title II – Adult Basic Education and English Language Learner Programs	Wisconsin Technical College System (WTCS)
Title III – Wagner-Peyser (Wisconsin's Public Labor Exchange: <a href="http://www.jobcenterofwisconsin.com">www.jobcenterofwisconsin.com</a> )	DWD-DET
Title IV – Vocational Rehabilitation Services	DWD-DVR (Division of Vocational Rehabilitation)
Additional Combined State Plan Partner: Jobs for Veterans State Grants (JVSG)	DWD-DET
Additional Combined State Plan Partner: Trade Adjustment Assistance (TAA)	DWD-DET



# Wisconsin Combined Plan

---

New in 2020-2023

<b>WIOA TITLE</b>	<b>WISCONSIN ADMINISTRATOR</b>
Reentry	Department of Corrections (DOC)
Temporary Assistance to Needy Families (TANF)	Department of Children and Families (DCF)
Food Share Employment and Training (FSET)	Department of Health Services (DHS)

**WIOA “Investing in America’s Competitiveness”**



# WIOA State Plan: Framework

---

## OVERVIEW

### I. WIOA STATE PLAN TYPE & EXECUTIVE SUMMARY

### II. STRATEGIC ELEMENTS

- a) Economic, Workforce, and Workforce Development Activities Analysis
- b) State Strategic Vision and Goals.
- c) State Strategy

### III. OPERATIONAL PLANNING ELEMENTS

- a) State Strategy Implementation
- b) State Operating Systems and Policies

### IV. COORDINATION WITH COMBINED STATE PLAN PROGRAMS

### V. COMMON ASSURANCES

### VI. PROGRAM-SPECIFIC REQUIREMENTS FOR CORE PROGRAMS

Title I, II, III, IV

### VII. PROGRAM-SPECIFIC REQUIREMENTS FOR COMBINED STATE PLAN PARTNER PROGRAMS

TAA, JVSG, TANF, FSET, Reentry



# Vision

---

We will deliver a results-driven talent development system providing opportunity for Wisconsin's current and future workforce, and businesses to sustain economic viability for individual and family self-sufficiency.





# Goals

---

- Access
  - *Establish a customer centric focus to increase coordination, effectiveness, and access to workforce development programs.*
- Alignment
  - *Engage partner staff to increase system alignment.*
- Accountability
  - *Facilitate meaningful outcomes through alignment of governance, accountability and metrics.*



# Strategies

---

- Increased collaboration and program Alignment
  - *New WIOA partners (DCF, DHS, DOC)*
- Using Labor market Information to promote Sector-Based Strategies
  - *Data Driven Decisions*
- Increasing knowledge of and Access to Career Pathways
  - *Leverage Sector Partnerships and Industry Recognized Credentials*



# Strategies

---

- Expand Opportunities for Work-Based Learning and Credential Attainment
  - *OJT, Youth and Registered Apprenticeship*
- Use Technology Solutions that Increase Collaboration and Innovation
  - *Common Intake and Data Governance*



# Implementation and Oversight

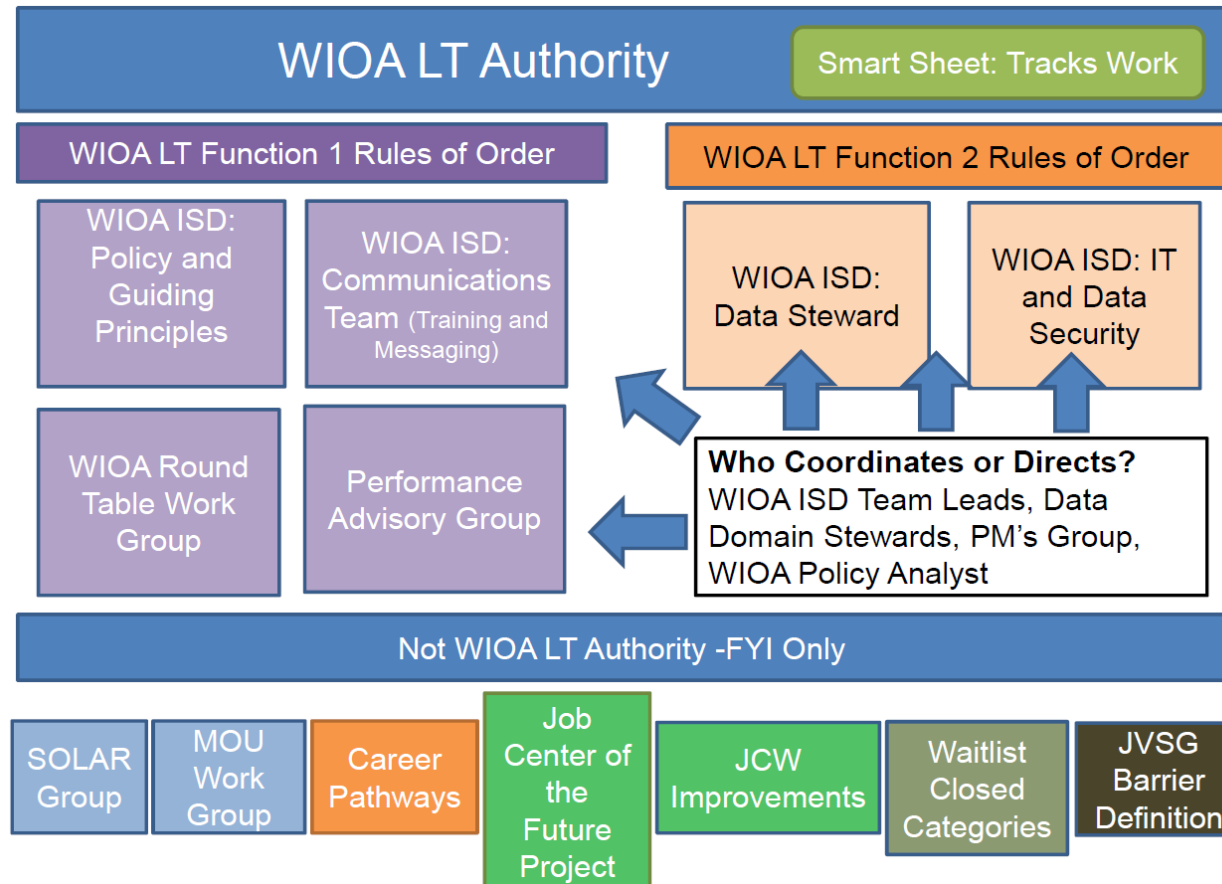
---

- WIOA Leadership Team
  - Adult, Dislocated Worker, Youth & TAA
  - Adult Basic Education
  - Job Service
  - Vocational Rehabilitation
  - Veterans Employment
  - Food Share Employment and Training
  - Temporary Assistance for Needy Families
  - Reentry

- CWI WIOA Committee
- CWI



# Implementation of State Strategies



# Timeline

---

- NLT Dec 6, 2019: Posted for 30 day public comment period
- Jan 2020: Route and review public comments
- NLT Feb 01, 2020: Final version routed for review/approval
- Feb 18, 2020: CWI final review and recommendation
- NLT Mar 2, 2020: Plan submitted to USDOL and USDOED



# Public Comments Posting

**WWW.WI-CWI.ORG**



## **Governor Evers' Council on Workforce Investment**

The Governor's Council on Workforce Investment is the federally-mandated entity under the Workforce Innovation and Opportunity Act that assists the governor in developing innovative and dynamic approaches to develop Wisconsin's workforce.

The Council is charged with aiding Wisconsin employers in finding the workers they need and providing resources to enable workers to access



DWD.WISCONSIN.GOV

# Contact Us

**WIOA State Plan Comments**  
**[DETWIOA@dwd.wisconsin.gov](mailto:DETWIOA@dwd.wisconsin.gov)**

**Carrie Schneider**  
**[Carriea2.Schneider@dwd.wisconsin.com](mailto:Carriea2.Schneider@dwd.wisconsin.com)**

**Phil Koenig**  
**[Phil.Koenig@dwd.wisconsin.gov](mailto:Phil.Koenig@dwd.wisconsin.gov)**

